

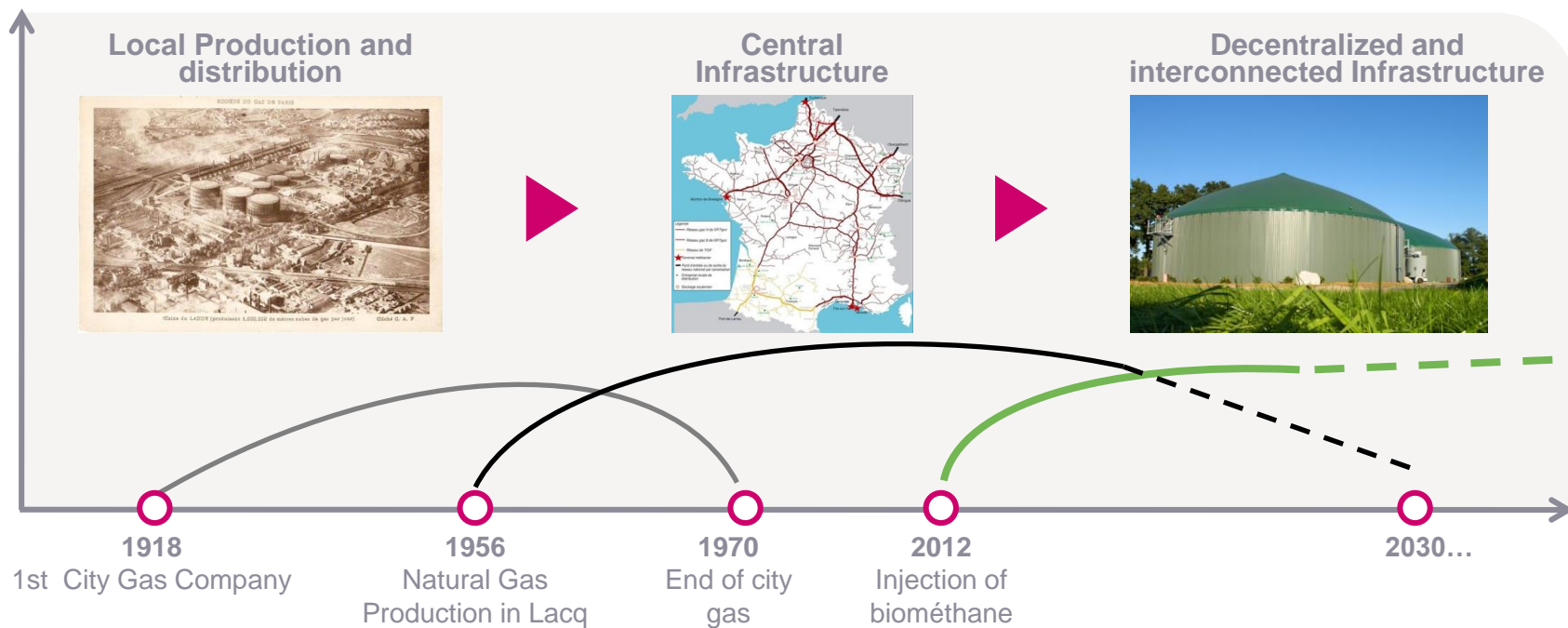
# GRDF

GAZ RÉSEAU  
DISTRIBUTION FRANCE

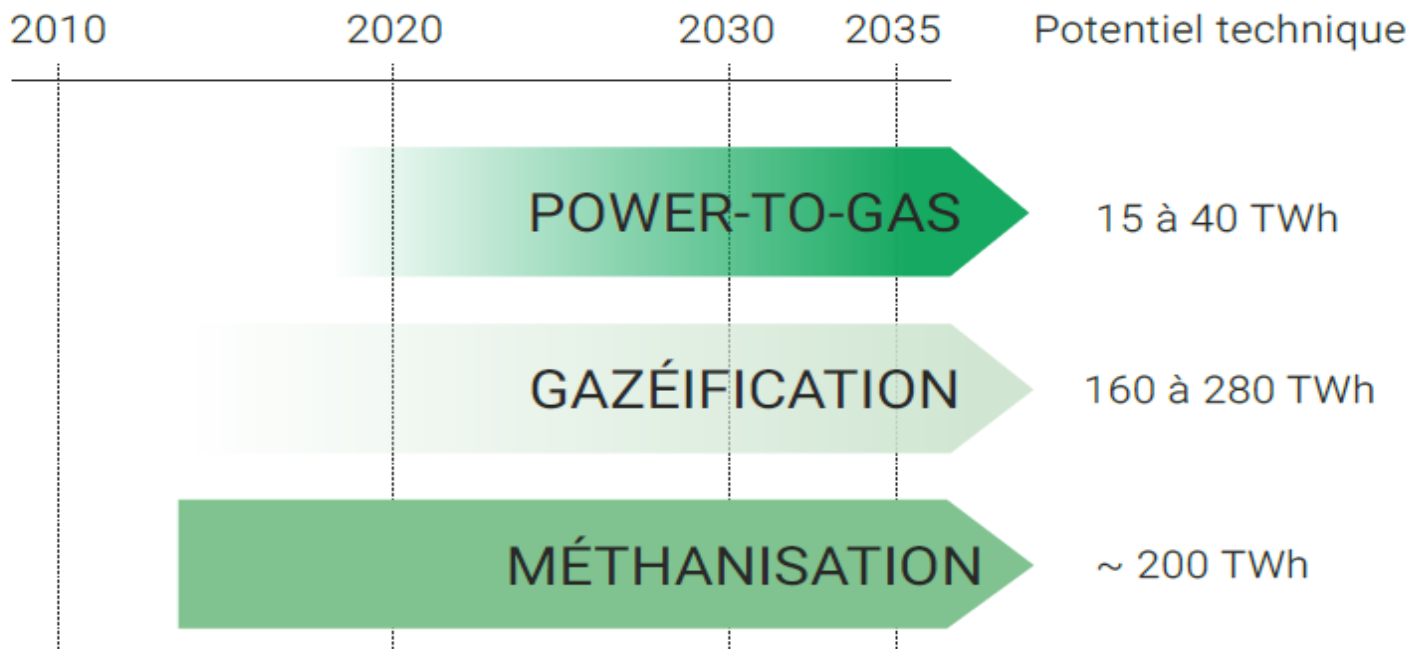


Le vecteur gaz  
un atout **pour** **2030**  
la transition  
énergétique

# Gas is facing a new revolution !



# Renewable gas potential can meet total gas demand in France



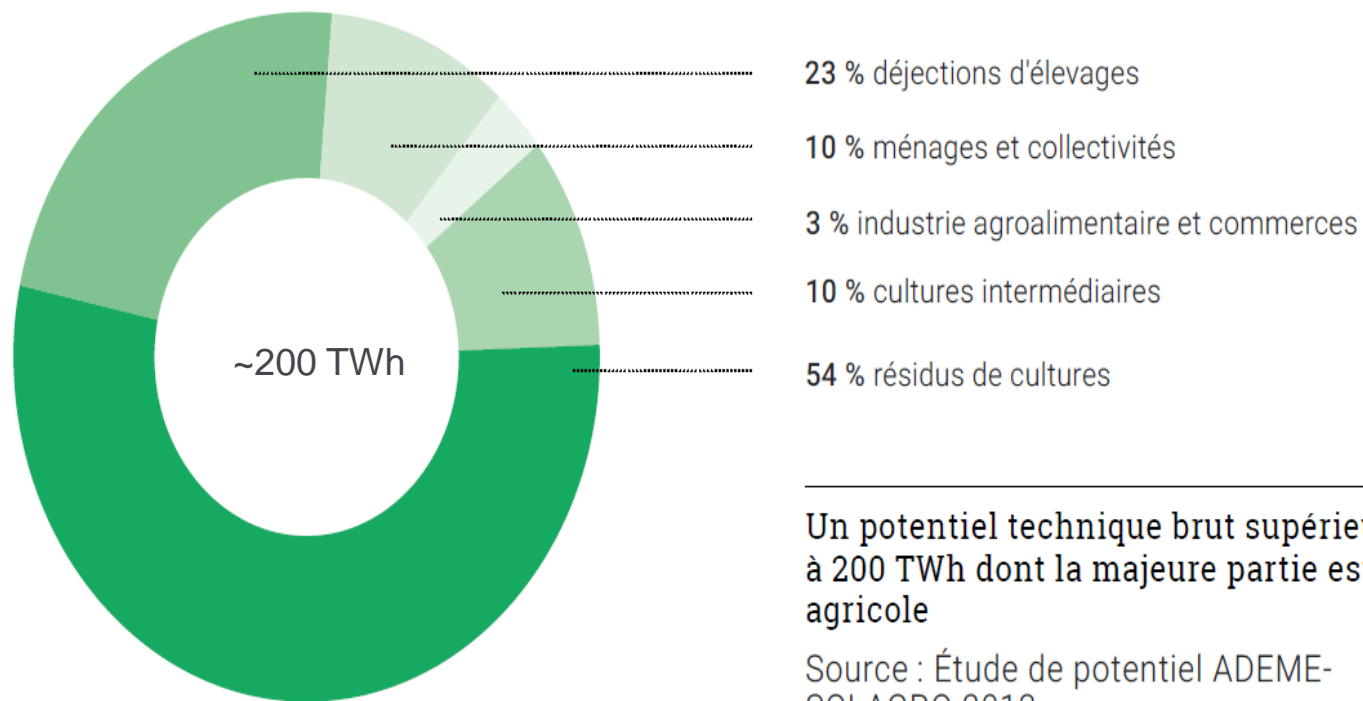
## Sources :

Étude de potentiel de méthanisation ADEME-SOLAGRO 2013

Étude gazéification GRDF/MEDDE/MAAF/MEF 2013

Étude power-to-gas ADEME/GRTgaz 2014

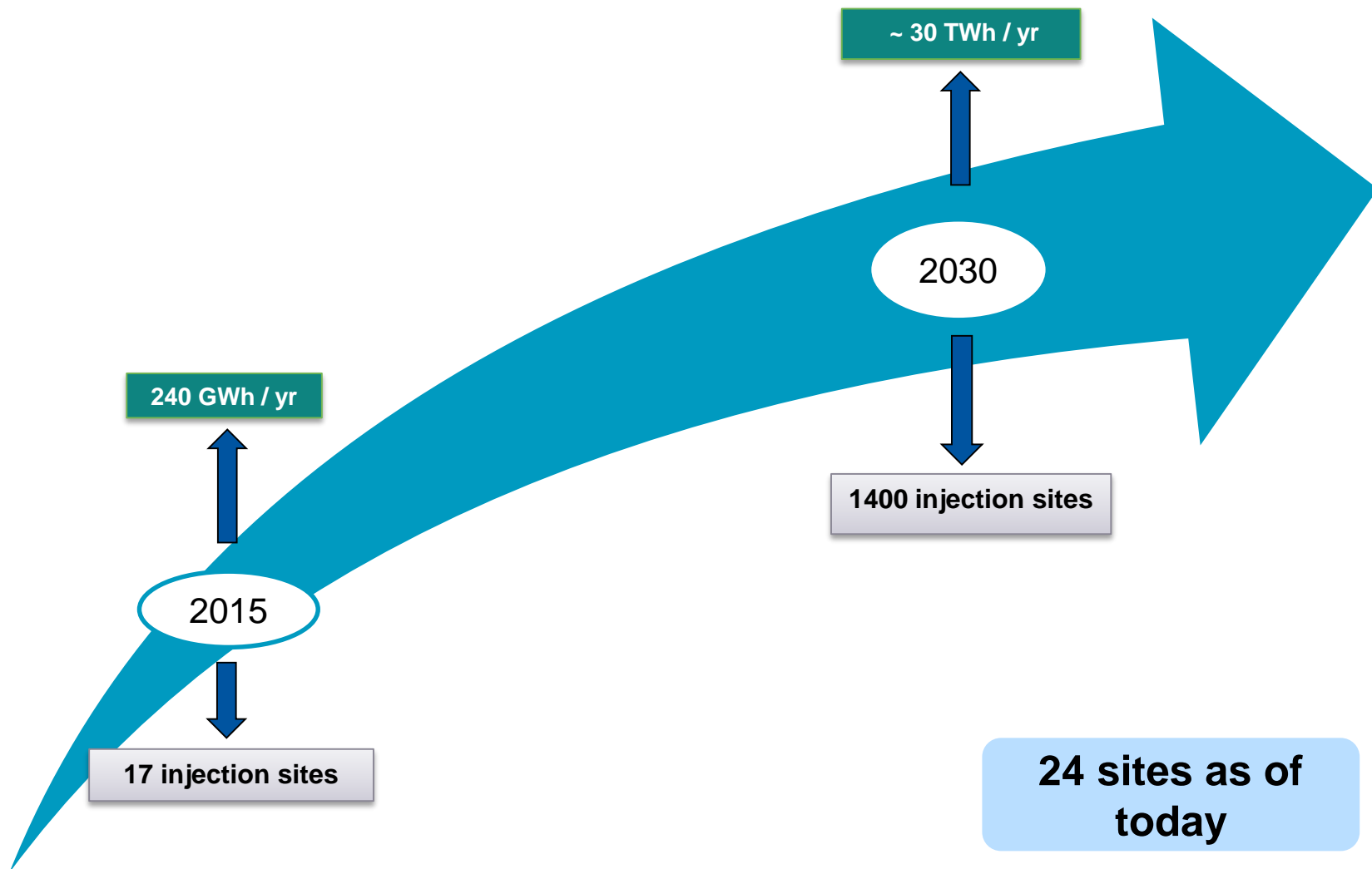
# Major part of technical potential of AD comes from agricultural feedstocks



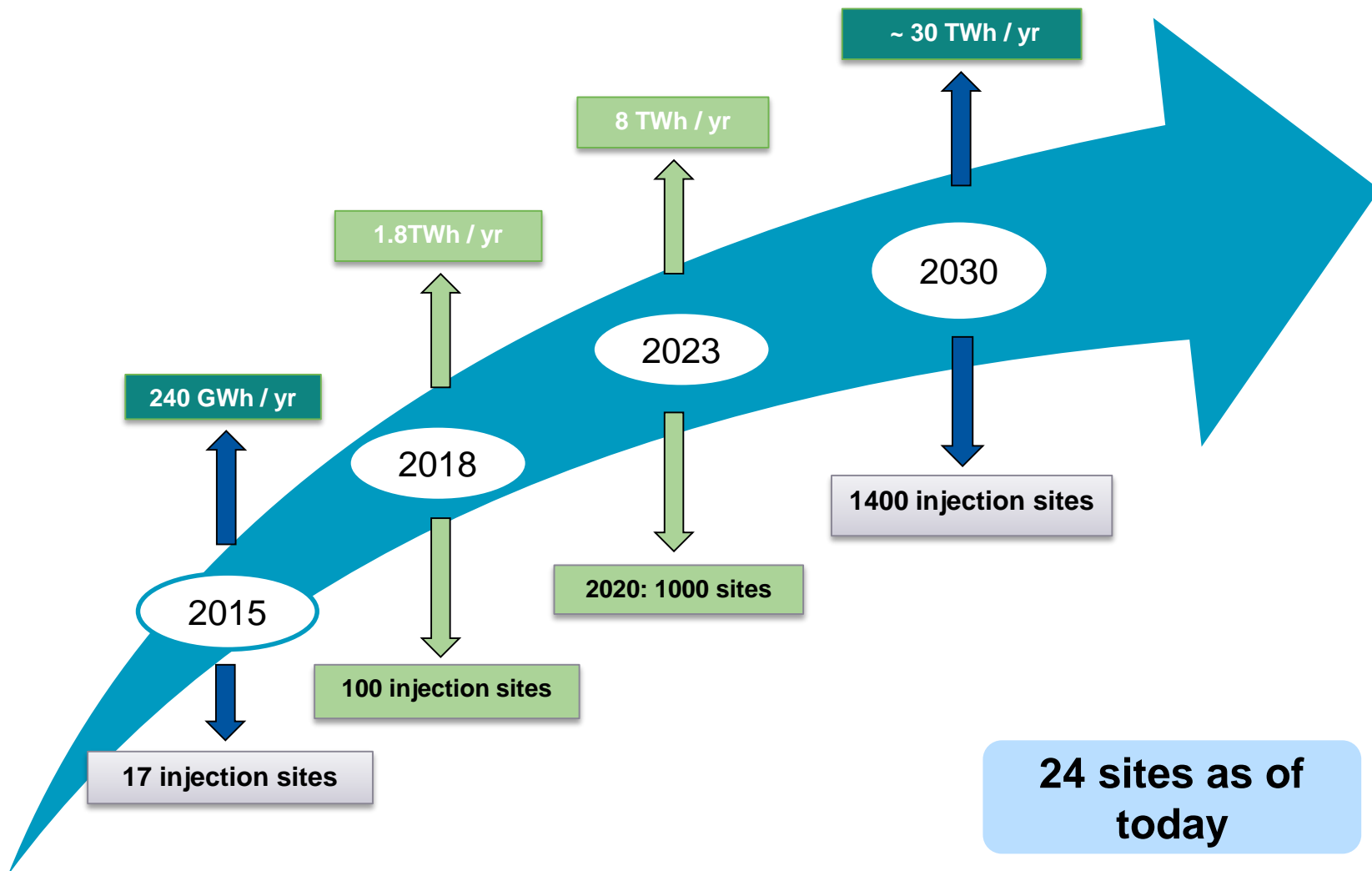
Un potentiel technique brut supérieur à 200 TWh dont la majeure partie est agricole

Source : Étude de potentiel ADEME-SOLAGRO 2013

# Objective of 10% of green gas in 2030 in France



# Objective of 10% of green gas in 2030 in France



# 2035 Scenarios & Success Factors

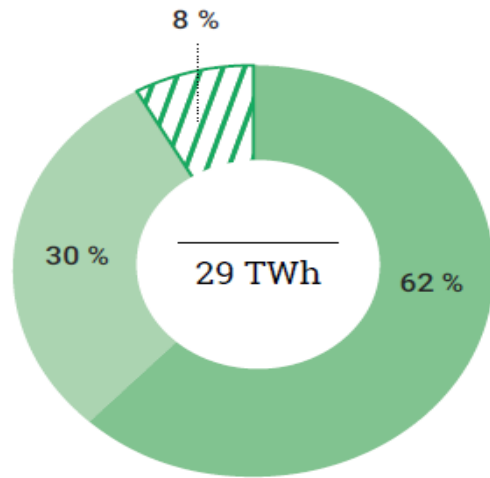
	Scénario A	Scénario B	Scénario C
Support Schemes	✓	✓	
Tax Incentives	x	✓	x
Simplification of administrative Procedures	✓	✓	x
Financial support for projects	✓	✓	x
Gas for Transport	x	✓	x

**29 TWh**

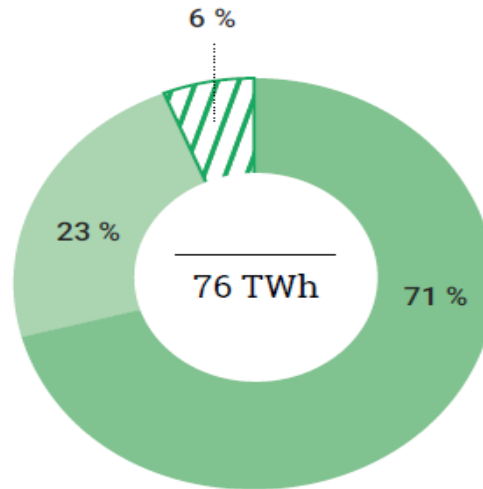
**76 TWh**

**12 TWh**

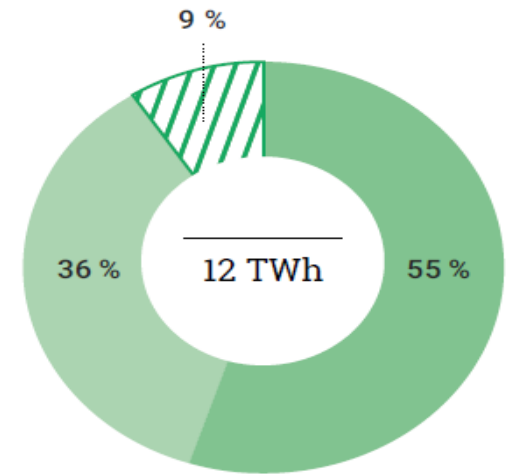
# Success Factors To Achieve Objectives



Scénario A



Scénario B



Scénario C

## Volumes de gaz renouvelables injectés en 2035

- Méthanisation
- Gazéification
- ▨ Power-to-Gas